

# Vicinity Map for the Painter's Riffle Fish Habitat Enhancement Project

## Legend

 Study Area



Center Coordinates of Study Area  
Latitude 40.583109 N  
Longitude 122.365302 W

Public Lands Survey System  
Section 31, Township 32 North,  
Range 4 West MDB&M

Topographic Map Layer Source  
National Geographic Society and i-cubed, 2013  
1:24,000 scale with 20-foot elevation contours

0 0.15 0.3 0.6 0.9 1.2  
Miles

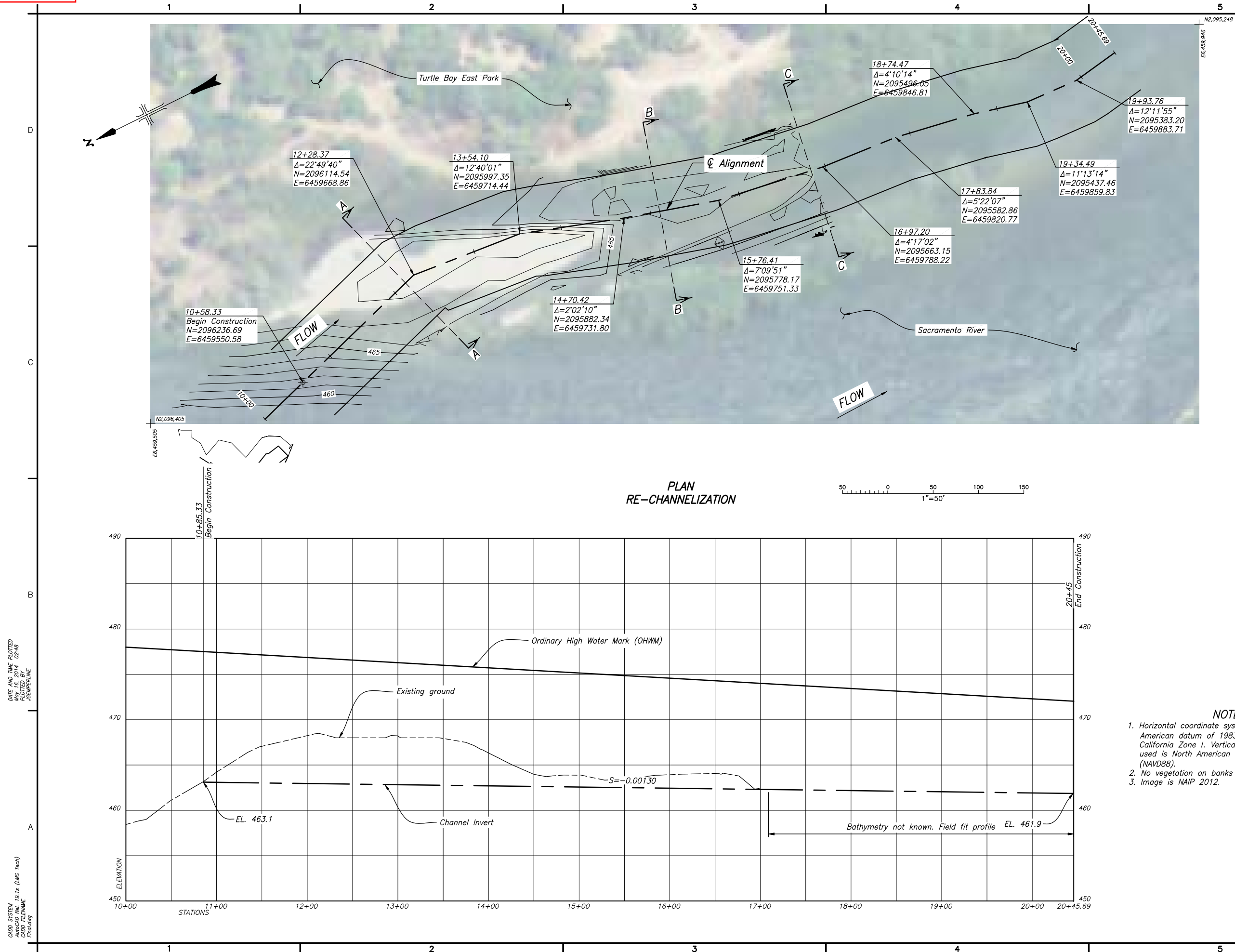


Bureau of Reclamation, Mid-Pacific Region  
2800 Cottage Way, MP-152  
Sacramento, California 95825

Date: January 3, 2014

Preparer: Andrea Meier





**RECLAMATION**  
*Managing Water in the West*

ALWAYS THINK SAFETY

U.S. DEPARTMENT OF THE INTERIOR  
BUREAU OF RECLAMATION

**PAINTEK'S RIFFLE SIDE CHANNEL**

**RE-CHANNELIZATION OF PAINTEK'S RIFFLE SIDE CHANNEL**

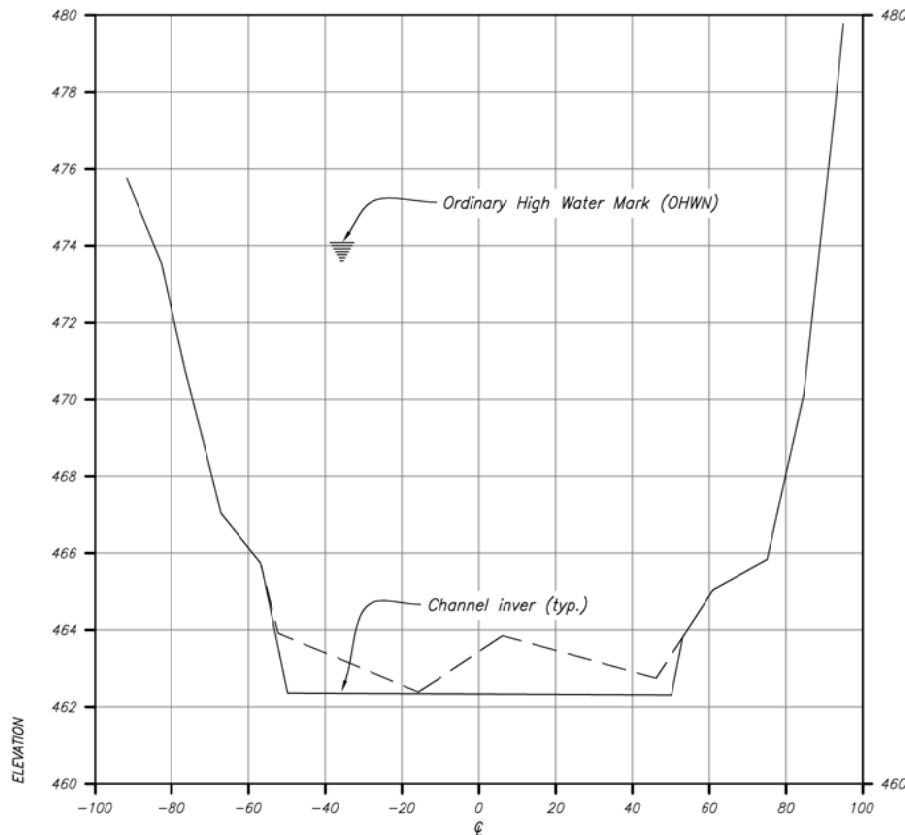
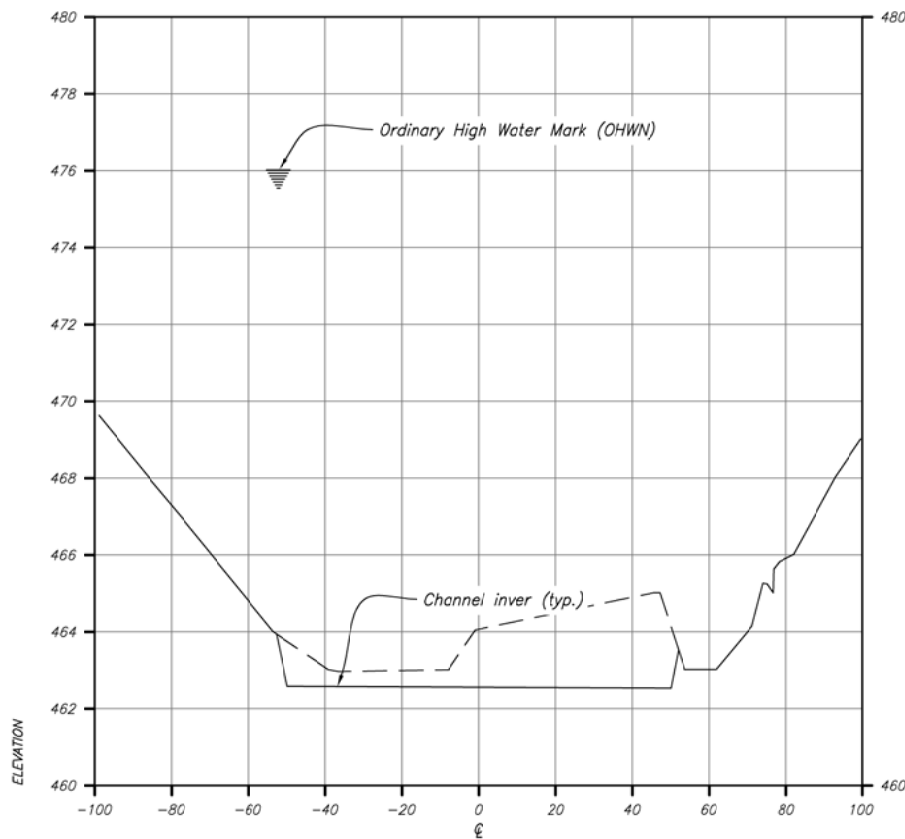
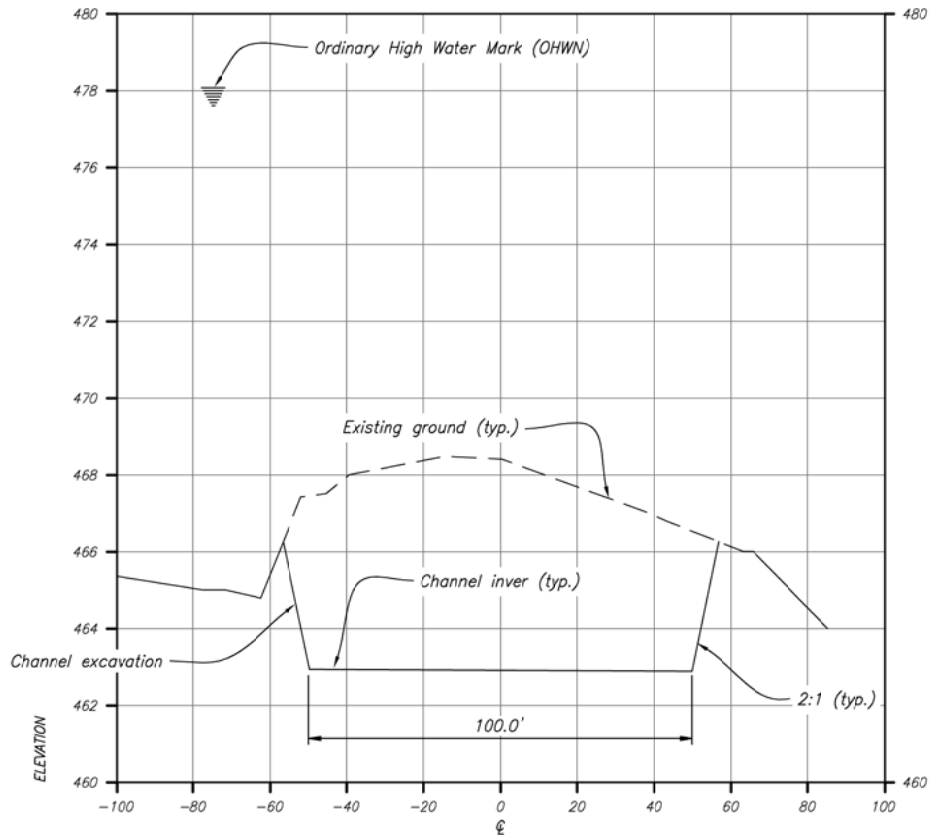
**PLAN AND PROFILE**

**STA 10+00 TO STA XXXX+00**

DENVER, COLORADO      APRIL 14, 2014

## RE-CHANNELIZATION OF RIVER

FIGURE 1  
SHEET 1 OF 2



NOTES  
1. Horizontal coordinate system used is North American datum of 1983 (NAD83) State Plane California Zone 1. Vertical coordinate system used is North American Vertical datum of 1988 (NAVD88).

DATE AND TIME PLOTTED  
APR 14 2014 04:50  
PLOTTED BY  
JGEMPERLINE  
CADD SYSTEM  
19.1s (LMS Tech)  
CADD FILENAME  
Final.dwg







## Legend

- Lateral Berm/Excess Relocation Sites
- Gravel Excavation/Redistribution Area
- Access Route
- Elderberry Shrubs
- Painter's Riffle
- Potential Reopened Trail/Access Route

## Painter's Riffle Anadromous Fish Habitat Enhancement Project

### Project Action Area

